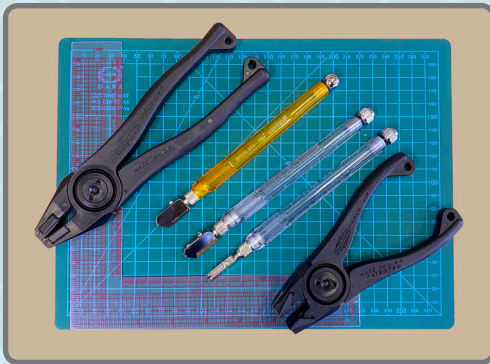
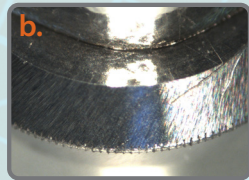
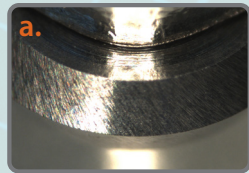


Carbide Cutters for Glass



Kit Contents (CC-Kit-100)

- Ruler and mat
- 8" pliers
- General purpose cutter
- Laser cutter
- Laser cutter UT
- 6" pliers



Carbide Cutters

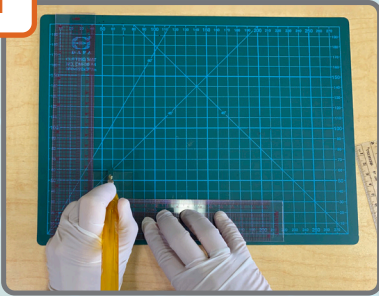
- Standard carbide cutting wheel
- "Laser" carbide cutting wheel (deep cut, non-slip, long life)

Table 1. Guidelines for use of carbide cutters.

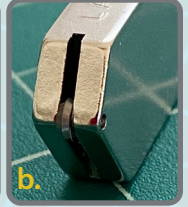
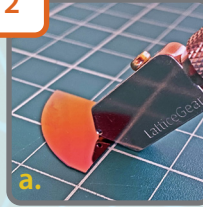
Material	Gen'l purpose cutter (TC-ND-STDH)	Carbide cutter laser (TC-ND-Laser)	Carbide cutter (TC-ND-Laser-UT)
Silicon	•	•	•
III-V	•	•	•
Thin glass .03-1.5mm			•
Thin glass .3-1.5mm	•	•	
Hard glass 0.3-3mm		•	•
Hard glass 0.3-6mm	•		
Thick glass to 10 mm			
Glass coverslips		•	•
LCD, half-tempered glass, quartz glass, ceramic		•	•

This table provides guidelines. Performance not guaranteed on all variations of these types of materials.

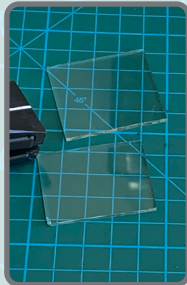
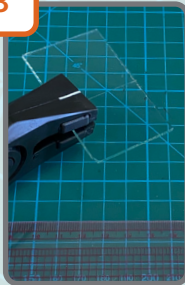
1



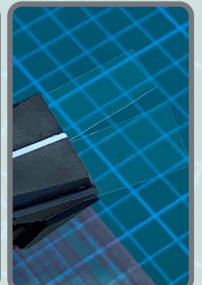
2



3



4



1. Use the ruler to steady the sample during scribing. Use painter's tape to prevent the ruler from moving.
2. (a) Hold the cutter at an angle when scribing. (b) The position of the cut is the center of the slot in the cutter (2.5mm from the side).
3. Use the general purpose cutter for glass slides and thick glass
4. For thin glass and hard glass use the Laser cutters.
5. For thick and hard glass cleave with 8" cleaving pliers. Use 6" pliers for other materials.

Kit Contents (for individual purchase)

- General purpose cutter (TC-ND-STDH)
- Hard and soft glass cutter (TC-ND-Laser)
- Thin glass / hard materials (TC-ND-Laser-UT)
- 6" cleaving pliers with extra jaws (CWBR-100)
- 8" cleaving pliers with extra jaws (CWBR-200)
- Self healing cutting mat 12"x9" (DF-129M)
- L-shaped ruler 8" with metric and inches

Other Cutters

- Carbide cutter: deep cutting for sapphire and off-axis silicon (TC-ND-D)
- Cutter for sapphire and thin substrates; handle not included (PCD-ND120)

*Remember to always keep the wheel clean!
Alcohol wipes work well.*

LATTICEGEAR

www.latticegear.com